

A modern kitchen with a central island, stainless steel appliances, and skylights. The kitchen features light-colored cabinetry, a dark countertop, and a large stainless steel range hood. A refrigerator with a water dispenser is on the right. The ceiling has several skylights, and there are large windows with dark curtains on the left. A yellow sofa is visible in the foreground on the left.

**VELUX®**

Extensions. Go one step further

Start here

# We believe extra space is just the beginning

Building an extension is a great way to create extra space. Whether it's to accommodate your growing family, or simply to help you spread out a little. In this guide we'll help you turn that extra space into something extra special.

We'll explain the importance of introducing daylight and fresh air to your design. Show you how to create a healthy indoor climate where you and your family can live more comfortably. And provide you with the products to help you achieve this.

You'll also find practical advice on the steps to take to help bring your extension project to life.

**Go one step**

Turn over to see  
the dramatic effect  
daylight has on  
this extension.









# Open up to natural light and watch your extension expand

Natural light is the perfect ingredient for extensions. Once added, it has the ability to make your extra space feel extra spacious. It can impact on all aspects of interior design, make a room come to life and connect it to the outside. As well as provide a range of health benefits.

**Go one step**



# How light can affect your design

Thanks to daylight, you have the opportunity to create something special. Something unique. And something the whole family will enjoy.

When a new extension is built the original room is usually longer. This means that natural daylight has further to penetrate into the house as the vertical windows are moved further away. All too often, the original room becomes dark and gloomy and even on the brightest days means that electric lights have to be switched on.

By using roof windows you can bring daylight deep into the living space, which makes the whole room feel brighter, larger and more welcoming.



As you can see, VELUX Roof Windows provide additional daylight deeper into the extension.

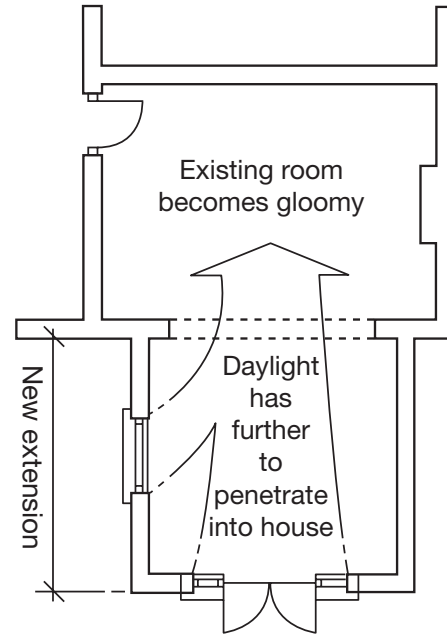
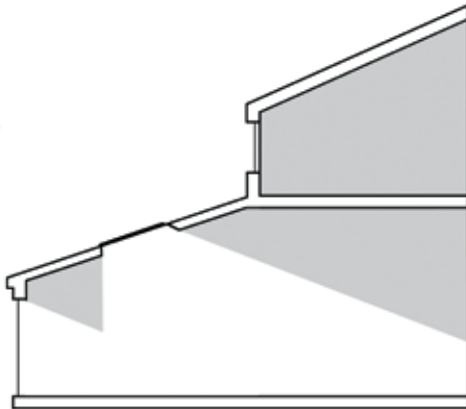


Diagram from Home extension design by Julian Owen, published by RIBA publications, 2008.





## Naturally good for you

Natural daylight has many benefits for our health. Just as a lack of it can have the opposite effect. Seasonal Affective Disorder (SAD) is a clinically diagnosed condition in which the lack of sunlight in winter makes people feel ill or depressed.

Research shows that daylight has a positive effect on productivity, concentration and children's learning abilities as well as general well-being.

In short, natural daylight can have a very positive effect on your mind and body.

## Look at your project from every angle

As well as daylight there's a lot to consider before you start out.  
After all, a new extension can be whatever you want it to be.  
A dining room, new living room, family room or open plan kitchen  
with views across the garden. It's entirely up to you.

**Go one step**



# A space that works for you

Consider what you want from your extra space. Architects and builders can advise and guide you, but you know your home and how you use your rooms and space better than anyone else.



You can see how from the outside, an extension can fit seamlessly with the rest of the house. Whilst allowing you to create an extraordinary space inside.

An extension will not only give you the extra space you are looking for, it will also alter the dynamics of the home. You may wish to take this opportunity to re-organise your existing rooms to improve the flow and function of all your living spaces.



Think about how the space will be used throughout the day and at different times of the year. A good extension will integrate well into the flow of your daily life.

See how the room changes during different times of the day.

further



## Choose your style

Take a look at your house as it stands at the minute. Are you looking to mix the old and new by adding something more contemporary? Or do you want an extension that fits seamlessly with the original building?

It's also worth considering the size and style of your extension. Is it one storey or two storeys? Will it be built at the back or side of the house? Does it run the width of the house or extend from a particular point?



Sloped



Pitched



Flat Roof Atrium



Flat Roof



Two Storey

Whatever style of extension is right for you, it's possible to add daylight through the roof deep into the living space.

## An energy efficient extension

Consider the energy efficiency of your design to reduce future heating and lighting bills. After all, the sun is the most powerful source of energy we have and we should be making maximum use of it.

A well lit extension will reduce your electricity bill, reducing the need for artificial light during the day.

The sun through your windows will not only provide light but also help heat the room. VELUX Roof Windows are energy efficient, with glazing that comes with a low-E coating to reflect heat back into the room. VELUX Blinds can be used to easily control excess heat and light.

Consider adding solar collectors to your new roof. Our new solar hot water system can provide up to 70% of a home's hot water requirements.



VELUX Solar Collectors integrate neatly into the roof.

Find more information about VELUX Solar Hot Water at [www.carbon-neutralhome.co.uk](http://www.carbon-neutralhome.co.uk) or [www.carbon-neutralhome.ie](http://www.carbon-neutralhome.ie)

## Taking comfort to the next level

Daylight isn't the only thing you can add to your extension to make it a more comfortable, useable space. Fresh air and controlling the temperature are just as important. Together they can help you create a healthy indoor climate. In this section we'll show you how our range of products will help you take complete control of your new living environment.

**Go one step**



# The importance of good ventilation

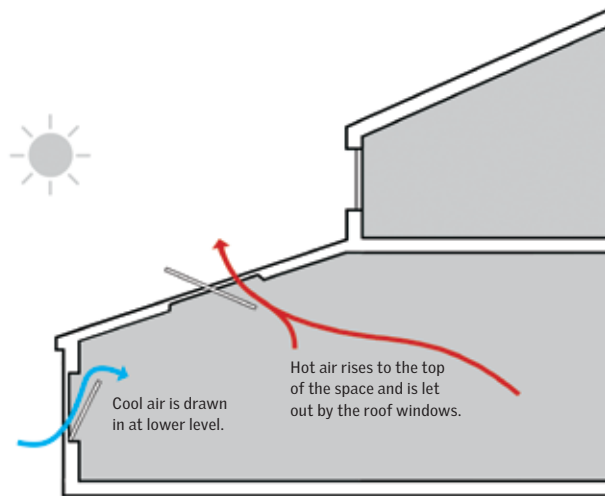
Proper and adequate ventilation of the room and building is another important consideration when planning your extension.

Well designed natural ventilation will help exchange stuffy, stale air with fresh air from the outside. This will improve the internal living environment of your home and use the flow of cooler air through the house to reduce overheating.

VELUX Roof Windows can help you create a healthy indoor climate where you and your family can live more comfortably.



The built-in ventilation bar on VELUX Roof Windows allows fresh air to circulate, even with the windows securely closed.



Warmer air is vented through the roof window, drawing cooler air through the room and house, providing a fresh supply of air at the same time.





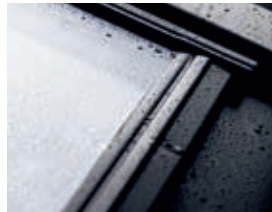
# INTEGRA®

## The world's number one electric roof window

Our range of INTEGRA® electric roof windows give you a simple, more intelligent way to add fresh air into your extension.

They're perfect for windows that are out of reach to open by hand. At the touch of a button, windows can be set to any position you desire. Allowing fresh air to circulate and the ambience of your new space to change in an instant.

The stylish remote control gives you programmable ventilation, personal presetting to control one or more windows and with built in rain sensor the windows even automatically close when it starts to rain.



The remote control can also be used to operate INTEGRA® electric blinds and shutters, to easily control the amount of light and heat from the sun. Keeping the heat out in the summer and helping retain the heat during colder periods of the year.



io-homecontrol® provides advanced and secure radio technology that is easy to install, io-homecontrol® labelled products communicate with each other improving comfort, security and energy savings.

homecontrol® [www.io-homecontrol.com](http://www.io-homecontrol.com)

## Clean, crisp and contemporary

If you wish to give your new extension a contemporary look, but still want a practical solution, consider our VELUX White range of roof windows.

This is where style and function come together.

**Go one step**



## Pure style

VELUX White Roof Windows give you so much more than natural light. They complement other white windows and doors to help create unity within your extension.

And with smooth rounded corners and contemporary white finish they're perfectly suited to today's modern living.

## Pure function

The timber core and polyurethane coating means they're extremely durable and moisture resistant.

So if you're looking to include a kitchen or bathroom in your new extension, or any room with a high level of humidity, our white range of windows is ideal.

INTEGRA® electric centre-pivot opening versions are ideal for extensions.







## Extending the possibilities

If you decide to build a flat roof extension, there are a number of ways to use daylight and fresh air as key design elements.

Take a look at our extended flat roof range and the possibilities are clear.

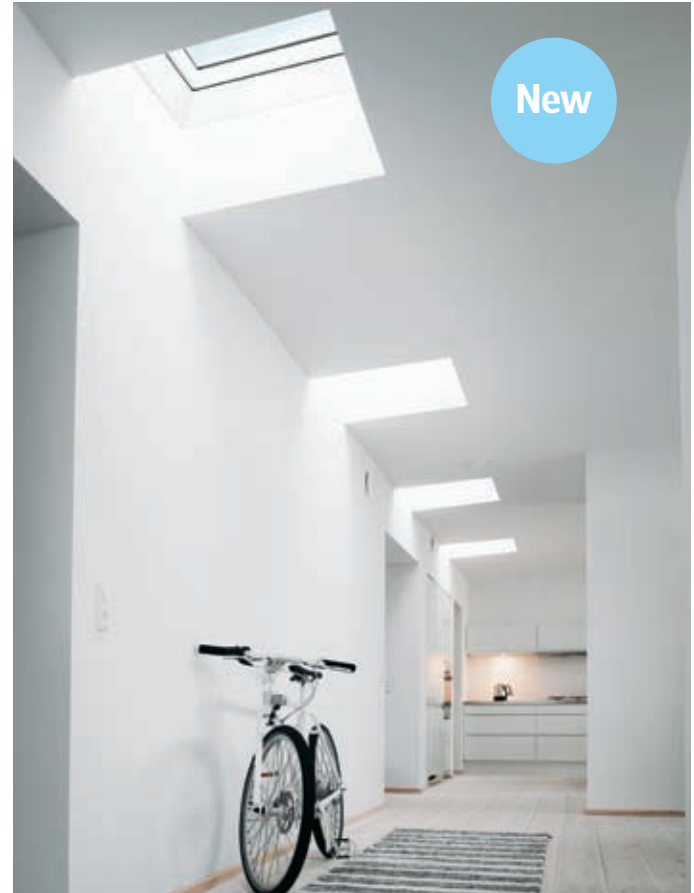
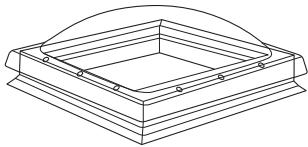
**Go one step**



## New Flat Roof Window design

The new Flat Roof Window from VELUX is energy efficient and offers excellent sound insulation from rain and hail. The polycarbonate cover simply protects the double glazed unit from rain and snow.

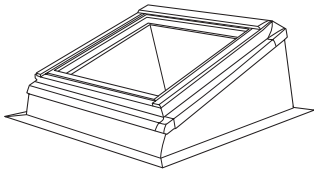
Choose the INTEGRA® electric version and you not only get an ample supply of natural light, but fresh air too. So you can create a healthy indoor climate at the touch of a button.



further

## Flat Roof Window

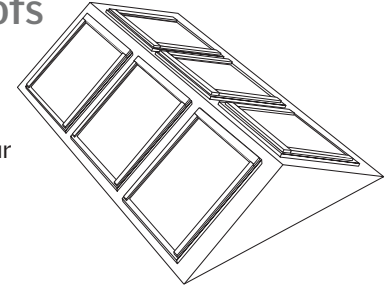
Our centre-pivot flat roof windows offer an alternative solution. Built on an insulated timber kerb, they flood the room below with daylight and fresh air. They can be easily opened either manually or with INTEGRA® electrics. They're available in a wide range of sizes with a pine or white internal finish. There's also a full range of blinds to choose from so you can control the daylight.



## VELUX Atrium.

### A new alternative for flat roofs

Be creative with a flat roof by using combinations of our centre-pivot roof windows to create an atrium effect.





## The steps to take

We hope this guide has filled you with inspiration to take your ideas forward.

The importance of bringing in a good professional as early as possible cannot be overstated.

They'll come up with ideas that may never occur to you. They'll work within your budget to help you achieve your overall aims. They can steer your project through the development, sticking to the agreed time frame.

In short, they can add real value to your extension plans.

### Work out a budget

Look at all aspects of your project and work out how much you have to spend. You should allow a 15% contingency to cover any surprises.

### Find professional help

Ask friends and family for a recommendation of an architect or builder. And check to see whether or not they've got past experience of extensions.

To help find an architect  
[www.architecture.com](http://www.architecture.com)  
[www.riai.ie](http://www.riai.ie)

To help find a builder  
[www.findabuilder.co.uk](http://www.findabuilder.co.uk)  
[www.houseofopportunities.co.uk](http://www.houseofopportunities.co.uk)  
[www.houseofopportunities.ie](http://www.houseofopportunities.ie)

### Planning permission

Ensure you understand the relevant planning rules that apply to your area.

You'll find help at  
[www.planningportal.gov.uk](http://www.planningportal.gov.uk)  
[www.scotland.gov.uk](http://www.scotland.gov.uk)  
[www.dfpni.gov.uk](http://www.dfpni.gov.uk)  
[www.environ.ie](http://www.environ.ie)

### Building regulations

Make sure your extension is safe and legal. You will need drawings to submit to your local Building Control office to ensure your extension meets Building Regulations. You may also require a structural survey if you're making any major structural changes to your property, such as knocking down a wall.

### Agree a time frame

This will help you manage your expectations and more importantly, your budget.



## Go one step further

We've included these steps to help you plan your project. You'll also find additional information to help you with your extension, including our handy online project planner, at [www.velux.co.uk/extensions](http://www.velux.co.uk/extensions) or [www.velux.ie/extensions](http://www.velux.ie/extensions)

For more information and prices on any of our products, download a price guide online or order by calling **01592 778 225** or **01 848 8775**



If you have completed an outstanding project that incorporates daylight using VELUX roof windows, we would be keen to hear from you.

VELUX Company Ltd.  
Woodside Way,  
Glenrothes,  
Fife, Scotland KY7 4ND  
Tel: 01592 778 225  
Fax: 01592 778 960  
E-mail: [enquiries@velux.co.uk](mailto:enquiries@velux.co.uk)  
Website: [www.velux.co.uk](http://www.velux.co.uk)

VELUX Company Ltd.  
Unit 1, Willsborough Cluster  
Willsborough Industrial Estate,  
Clonshaugh, Dublin 17, Ireland  
Tel: 01 848 8775  
Fax: 01 848 8787  
E-mail: [enquiries@velux.ie](mailto:enquiries@velux.ie)  
Website: [www.velux.ie](http://www.velux.ie)

*Bringing light to life™*

**VELUX®**

© 2009 VELUX GROUP, VELUX®, VELUX logo®, Room in the Roof®, CABRIO®, and INTEGRA® are registered trademarks.

